

# KWH METER - DIN RAIL MOUNT



## SINGLE PHASE - NMI APPROVED

**SOLAR  
COMPATIBLE**

### FEATURES & BENEFITS

- Slimline design
- NMI approved for billing applications
- Digital LCD display
- Tamper seal kit supplied
- 1 year warranty
- Suitable for solar applications.

### SPECIFICATIONS

#### Materials:

- Housing - Fire resistant ABS

#### Weatherproof rating:

- IP51

#### Display:

- Backlit blue LCD

#### Accuracy class:

- Class 1

#### Insulation class:

- Class 2

#### Maximum rated current:

- 100 Amp

#### Operational current range:

- 0.25 - 100 Amp

#### Over current withstand:

- 1000 Amp for 0.1s

#### Nominal voltage:

- 230 Vac

#### Operating frequency:

- 50 - 60 Hz

#### Maximum cable capacity:

- 25mm<sup>2</sup> (neutral 2.5mm<sup>2</sup>)

#### Operating temperature:

- -20°C to 65°C

#### Test output flash rate:

- 1000 impulses per kWh

#### Power supply indicator:

- Mains power ON

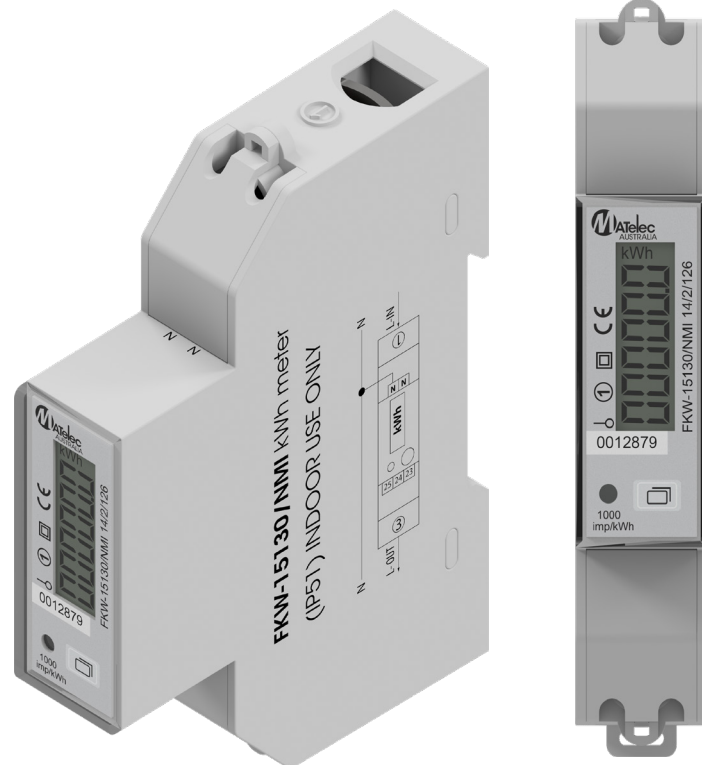
#### Consumption indicator:

- Flashing on load

#### Dimensions:

- 90mm (H) x 18mm (W)  
x 72mm (D) 1 Module

| Report/Certification Number  | Date Issued |
|--|-------------|
| UL, LLC test report reference no. R11456868-NMI (NMI M6-1)   | 27/07/2017  |
| NMI M6 Clause A.2.16 Short Term Overcurrent Test C, Ref PL1545-R1  | 19/04/2017  |
| National Measurement Institute CoA NMI 14/2/100  | 04/10/2017  |
| IEC Test Report IEC62053-21:2003, IEC 62053-11:2003, SICEM Ref WJ14297 (IEC 62053-21:2003 and IEC 62052-11:2003) | 12/12/2014  |



| Code          | Description   | Packing | MOQ | Ctn |
|---------------|---|---------|-----|-----|
| FKW-15130/NMI | KWH Meter - Single Phase Din Rail Mount - NMI Approved - Solar Compatible | 1       | 1   | 90  |